

modulex





Modulex HQ, Billund, Denmark

Modulex

Wayfinding, signage and graphic solutions.

Modulex was founded in 1963 by the Lego Group. Since then, we have grown to become a global provider of wayfinding, signage and graphic solutions.

The knowledge and experience we have built since then is the foundation of the advice, service and support that we offer to our Clients.

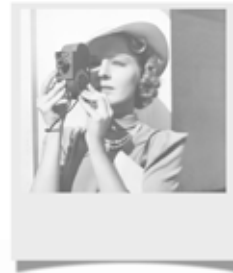
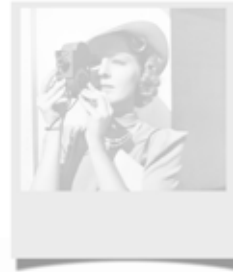
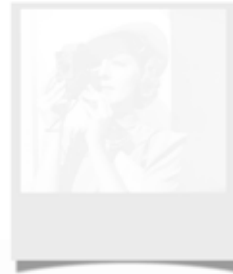
Our goal is to help create accessible, productive and engaging environments through the provision of clear and timely communication.

Our approach is built around 4 simple questions.

Question 1

Can I see it?

Seems obvious but you'd be surprised. Best intentions disappear as sightlines become obscured or message size and positioning is compromised. In fact, is anyone even looking?





Question 2

Can I read it?

This is not a sight-test. If you want to avoid creating delay, confusion and frustration make sure it is legible.



Question 3

Can I understand it?

"Say what you mean" as the March Hare tells Alice. Be concise and reinforce the instruction or message with every tool at your disposal (or ours).

Question 4

Do I trust the information?

If it is credible, it will reassure prompting swift decisions and actions.

(Apparently the hormone oxytocin is responsible for building trust. You can take our word for it).





Let's be clear

Our solutions are capable of meeting the most demanding circumstances. We offer custom designed and fabricated sign products, flexible and proven modular systems and digital products designed to respond to future change, as well as a broad range of graphic printing technologies offering designers complete creative freedom.

Copenhagen Business School, custom signage (left)



*Maersk, system signage (left)
South Harbour School, exterior signage (top)
Sample, relief printing (bottom)*



Youthscape, custom graphic (above)
VIA University College, exterior signage (top left)
Bella Sky, digital signage (bottom left)

Contact us

If you have any questions for us
you can contact us on:

Int. +45 7219 3000

UK +44 1604 684020

USA +1 305 503 7737

info@modulex.com

We'll happy to help, clearly.



Design and concept: Foxtrot Hotel

Modulex HQ, Billund, Denmark

A large, illuminated white sign for Humber River Hospital. The sign features a blue 'H+' logo on the left and the text 'HUMBER RIVER HOSPITAL' in blue, sans-serif capital letters to its right. The sign is mounted on a concrete base and is illuminated from within, casting a soft glow. In the background, a modern hospital building with large glass windows is visible, reflecting the sky. The sky is a mix of blue and orange, suggesting dusk or dawn. A metal railing is visible in the distance on the right side of the frame.

H+
HUMBER RIVER
HOSPITAL

Clearly